

A: Because he doesn't want to get tire-d.

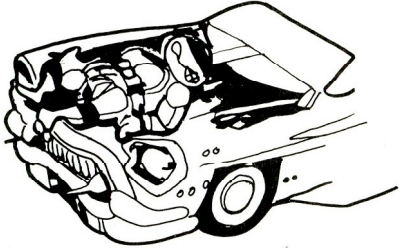
Q: Why does Shredder make the Foot Soldiers change the flats on the Footcruiser?

A: Brake dances.

Q: What does the Footcruiser do at the Disco?

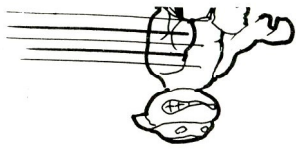
Q: What happens when the Footcruiser spots a Turtle?

A: A flat back attack.



Q: What needs to be replaced most on the FOOTcruiser?

A: The brake SHOES.



A: A head start.

Q: What's the best thing you can have if you're chased by the Footcruiser?



A: Because he does it in-STINK-tively.

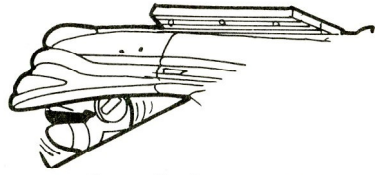
Q: Why wasn't it hard for Rocksteady to learn to drive the Footcruiser?

Q: What kind of shot makes the Footcruiser go?

A: A fuel injection.

Q: Why does Bebop think he should be the Footcruiser driver?

A: Because he always has gas.

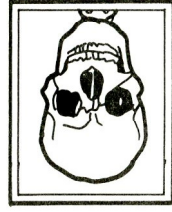


A: Only one, because then it's not empty any more.

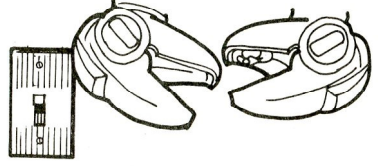
Q: How many Mousers fit into an empty Footcruiser trunk?

A: Because they can always use an extra horn.

Q: Why should the Footcruiser join a marching band?



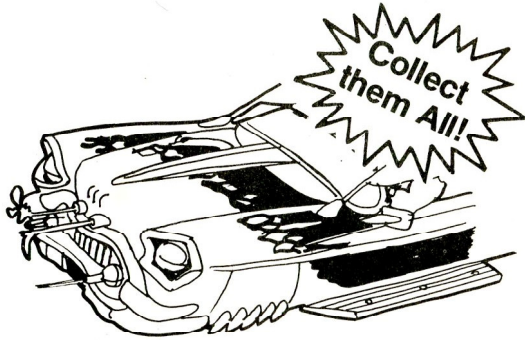
Q: Why didn't Krang's picture look like him?
A: It was an X-ray.



Q: Where were the Mousers when the lights went out?
A: In the dark.

TEENAGE MUTANT NINJA
TURTLES[®]

National Turtle Quiz Jokebook
Fresh from the sewer humor #16



Playmates[®]

Written & compiled by Patricia Black
© 1989 Mirage Studio
Printed in Hong Kong by Playmates Toys, Inc.

TEENAGE MUTANT NINJA
TURTLES[®]
Footcruiser

National Turtle Quiz Jokebook #16



Playmates[®]